

# For Sale

## Luxury 50ft Cruising Launch



**T.S. Kualani**

### A unique opportunity to purchase a vessel of the highest quality

The T.S. Kualani is a luxury cruiser of the highest possible quality throughout. Built to the exacting specifications of a prominent Wellington businessman, the late Mr Hugh Carter, the T.S. Kualani was designed and built by professionals of the highest calibre.

The Kualani was completed only last December and now the Trustees of Mr Carters estate offer this brand new vessel for sale.

The late owner's brief to the designer, Mr Athol Burns of Wellington, was strict.

"It was to be a good sea boat, stable in all conditions. Construction was to be the strongest possible, workmanship of the highest order. Engines and engineering to be of the best obtainable, noise and vibration reduced to a minimum.

Full headroom was required, accommodation for up to eight, but of very comfortable proportions for four to five.

Finish, trims and furnishings to be the best quality".

It can be seen that no cost was spared to produce a vessel of unsurpassed qualities.

#### General Specifications

Length: 50' 5"  
Beam: 14' 7"  
Draught: 5' 6"  
Displacement: 25 tons  
Designed by: Mr A. W. Burns, Wellington.  
Builders: P. Jorgensen & Sons Ltd, Picton.

#### Construction

Of the finest quality heart grade timbers. Kauri on kauri and spotted gum backbone and framing. Scantlings in excess of the New Zealand Marine Department's and Lloyd's requirements. Fastenings of copper and approved bronze throughout.

All fittings, jointing, protective painting, preserving and filling of the best standards.

#### Machinery

Propulsion by twin handed Gardner Diesel Marine units, model 5LW. Rated 70 B.H.P. (heavy duty) at 1300 R.P.M. with Gardner reverse gearboxes model 2UC fitted with 3:1 reduction gears, sub tropical heat exchangers, water and oil temperature thermometers, oil pressure gauges, engine and bridge readings, automatic warning alarms.

Single lever twin remote gearbox and throttle hydraulic controls, flexible dry exhaust silencer and funnels.

110 A/H 24 volt alternators, 102 A/H h/d starting batteries.

The ancillary engine room equipment of two Woods induction fans, one Woods extraction fan, two Maxiflo bilge pumps, self priming with clutch and belt drives, bilge pumping six valve control box.

Fuel gathering boxes (for each motor) with full valve control from and to all tanks and alternately each motor.

Deck machinery, Nilsson anchor windlass double warping drums and gypsies 24v 3000lb. capacity.

#### Deck Hardware and Fitout

Bronze stemhead roller fittings, six bronze open fairleads, five 16" nigger head steel bollards, timber bitts at bow and stern. Signal mast, davits and hoisting gear.

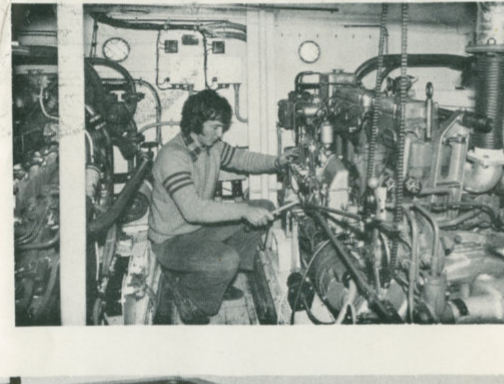
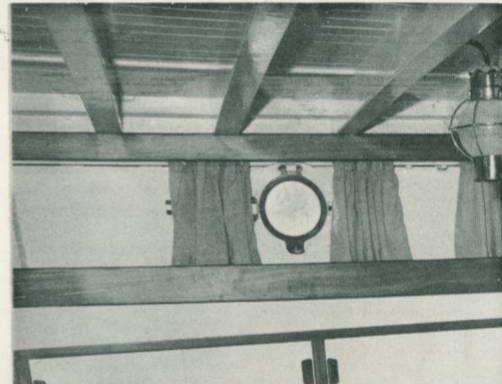
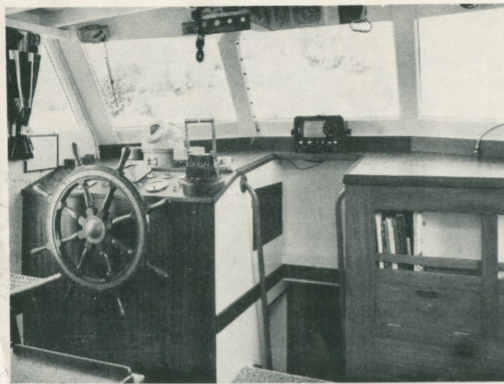
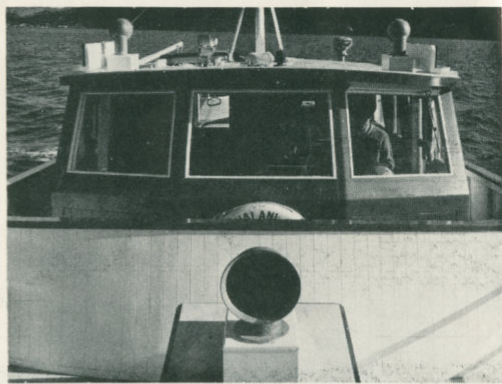
#### Ventilation

Weather proof cowls to three Woods fans. Cowl vents to galley, wheelhouse, toilet and shower.

Electric extractor supplies air conditioning in galley.

#### Battery and electric lights and fittings

24v A/Hexide Kathanode NB 19 domestic battery lamps at all necessary points. Installation to the highest electrical standard.



#### Water and Heating Services

Five freshwater tanks holding 250 imperial gallons. Automatic supply to cold and hot outlets power op. Heating to all cabins from stove calorifier.

#### Interior Construction and Finish

All foundations kauri. All visible surface and furniture mahogany finished flat clear natural. All interior floors, except galley, are thick wool carpet. Walls are finished in off-white.

#### Accommodation and Interior Design

The forward cabin is designed with two upper and two lower berths with drawers underneath.

To port, on either side of a passage way, are a toilet and handbasin, with holding tank and lockers.

To starboard, a shower with holding tank and discharge pump. The spacious wheelhouse centred over the engine room has instrument and chart bench with drawers and lockers underneath, a coat locker, general locker, helm seat, a television alcove, a folding table and two comfortable settees.

To port, steps lead down to the fully equipped galley, with an 8.5 cu. ft. deepfreeze, a 3 cu. ft. refrigerator, sink and bench unit, Perkins diesel cooker with oven, hot top, bolster water heater, fiddles, flue, canopy and vent all in stainless steel. Drawers, utensil lockers and a pantry locker give ample storage for food and equipment.

To starboard, opposite the galley, is a dinette lounge with settees, table, lockers and shelves.

A centre passage way then leads to aft cabins and cockpit. The two single aft cabins each have a single berth with lockers, drawers and wardrobes. The port cabin is fitted with dressing table, the starboard with writing desk.

Total Accommodation: Six cabin berths plus four additional settee/berths.

Copies of the blueprints of the T.S. Kualani are available to genuinely interested buyers, who should contact the Master Agents.

#### Master Agents:

P. Jorgensen & Sons Limited,  
P.O. Box 38,  
Waikawa Bay,  
Picton,  
New Zealand.  
Telephone Picton 204.

#### Auckland Enquiries:

H. M. Taylor, Shipbrokers,  
67 Anzac Street,  
Takapuna,  
Auckland,  
New Zealand.  
Telephone 494-541.